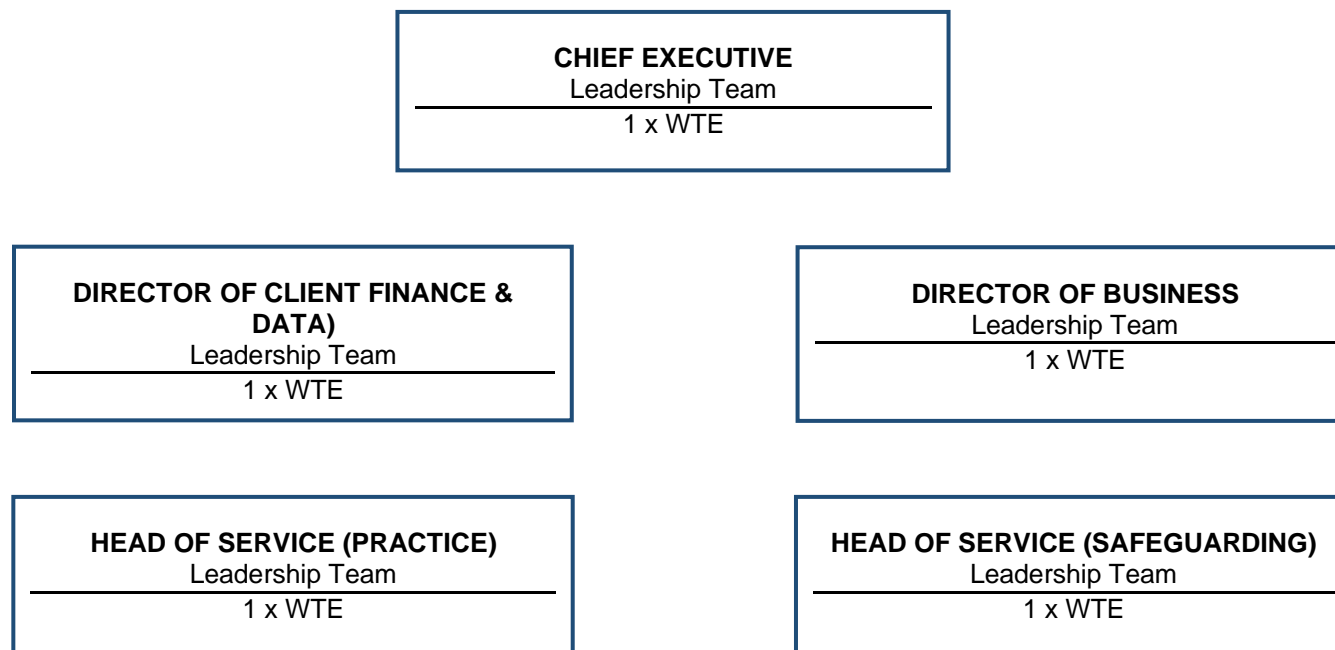


LEADERSHIP TEAM

SOCIAL WORK PRACTICE TEAMS
HEAD OF SERVICE (PRACTICE)

 Leadership Team

1 x WTE

SOCIAL WORK MANAGER

 Social Work Management Team

5 x WTE

TRIAGE TEAM

| | |
|----------------------------------|-------|
| Senior Social Work Practitioner | 3 WTE |
| Social Work Practitioner (L1) | 4 WTE |
| Visual Rehabilitation Specialist | 1 WTE |

SPA TEAM

| | |
|---------------------------|-----------|
| SPA Manager | 0.93 WTE |
| Integrated Advice Officer | 12.02 WTE |
| A3 Assessor | 2.68 WTE |

ACTIVE TEAM

| | |
|---------------------------------------|-------|
| Senior Social Work Practitioner | 3 WTE |
| Social Work Practitioner (L1) | 5 WTE |
| Social Work Co-ordinator / Apprentice | 3 WTE |

ACCESS TEAM

| | |
|---------------------------------------|-------|
| Senior Social Work Practitioner | 4 WTE |
| Social Work Practitioner (L1) | 6 WTE |
| Social Work Co-ordinator / Apprentice | 5 WTE |

MAINTENANCE TEAM

| | |
|---------------------------------------|-------|
| Senior Social Work Practitioner | 4 WTE |
| Social Work Practitioner (L1) | 2 WTE |
| Social Work Co-ordinator / Apprentice | 1 WTE |



SAFEGUARDING TEAM**HEAD OF SERVICE (SAFEGUARDING)**

Leadership Team

1 x WTE**SAFEGUARDING ADULTS TEAM**

| | |
|--|----------|
| Advanced Safeguarding Practitioner | 2.88 WTE |
| Safeguarding Adults Practitioner (L2) | 2.5 WTE |
| Safeguarding & DoLS Practitioner | 2 WTE |
| Safeguarding Co-ordinator / Apprentice | 4 WTE |

SAFEGUARDING ADULTS BUSINESS TEAM

| | |
|----------------------------------|---------|
| Business Manager | 1 WTE |
| Senior Business Services Officer | 2 WTE |
| Business Services Officer | 4.9 WTE |





STAFFING STRUCTURE

FINANCE & PERFORMANCE TEAM

DIRECTOR OF CLIENT FINANCE & DATA

Leadership Team

1 x WTE

COMMUNITY CARE FINANCE TEAM

| | |
|---------------------------------|----------|
| Finance Team Manager | 2 WTE |
| Finance Team Leader | 2 WTE |
| Direct Payment Officer | 3.10 WTE |
| Financial Assessment Officer | 5.24 WTE |
| Payment & Collections Officer | 1.82 WTE |
| Payment & Collections Assistant | 2.63 WTE |
| Finance Admin Assistant | 3.62 WTE |

CORPORATE APPOINTEE TEAM

| | |
|------------------------------------|-------|
| Corporate Appointee Manager | 1 WTE |
| Senior Corporate Appointee Officer | 2 WTE |
| Corporate Appointee Officer | 2 WTE |
| Corporate Appointee Assistant | 1 WTE |

PERFORMANCE & SYSTEMS TEAM

| | |
|-------------------------------|-------|
| Performance & Systems Manager | 1 WTE |
| Budget Monitoring Officer | 1 WTE |
| Budget Monitoring Assistant | 1 WTE |



PEOPLE SERVICES, CORPORATE SERVICES, OPERATIONAL SERVICES & QUEST
DIRECTOR OF BUSINESS

 Leadership Team

1 x WTE

CORPORATE BUSINESS MANAGER

2 X WTE

PEOPLE SERVICES TEAM

| | |
|-------------------------|-------|
| People Services Manager | 1 WTE |
| People Services Officer | 2 WTE |

CORPORATE SERVICES TEAM

| | |
|---------------------------------------|----------|
| Accounts Officer | 0.71 WTE |
| Executive Assistant to CEO | 0.79 WTE |
| Personal Assistant to Leadership Team | 1 WTE |

QUEST

| | |
|--|-------|
| Practice Development, Assurance & Education Lead | 1 WTE |
| Senior Practice Development & Education Practitioner | 1 WTE |
| Practice Development, Assurance & Education Practitioner | 3 WTE |
| Quest Training Manager | 1 WTE |
| Quest Training Officer | 1 WTE |
| Quest Training Administrator | 2 WTE |

COMMUNICATION & ENGAGEMENT TEAM

| | |
|--|----------|
| Communications & Engagement Manager | 0.88 WTE |
| Marketing & Digital Communications Manager | 1 WTE |
| Communication & Engagement Officer | 1 WTE |
| Communication & Engagement Assistant | 1 WTE |

OPERATIONAL SERVICES TEAM

| | |
|---|----------|
| Operational Services Manager | 1 WTE |
| Operational Services Officer (Supervisor) | 1 WTE |
| Operational Services Officer (ICAAP) | 1 WTE |
| Operational Services Co-ordinator | 8.41 WTE |



INFORMATION GOVERNANCE**DIRECTOR OF CLIENT FINANCE & DATA**

Leadership Team

1 x WTE**INFORMATION GOVERNANCE TEAM**

| | |
|----------------------------------|-------|
| Information & Governance Manager | 1 WTE |
| Information Governance Officer | 1 WTE |
| Information Governance Assistant | 1 WTE |

